

048454

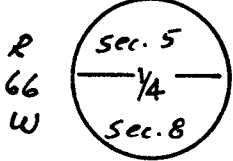
RECEIVED  
LARAMIE COUNTY  
CHEYENNE, WY.

CERTIFIED LAND CORNER RECORDATION

'88 SEP 6 AM 10 27

DESCRIPTION OF CORNER EVIDENCE FOUND, AND ORIGINAL RECORD (If known)

T 13 N

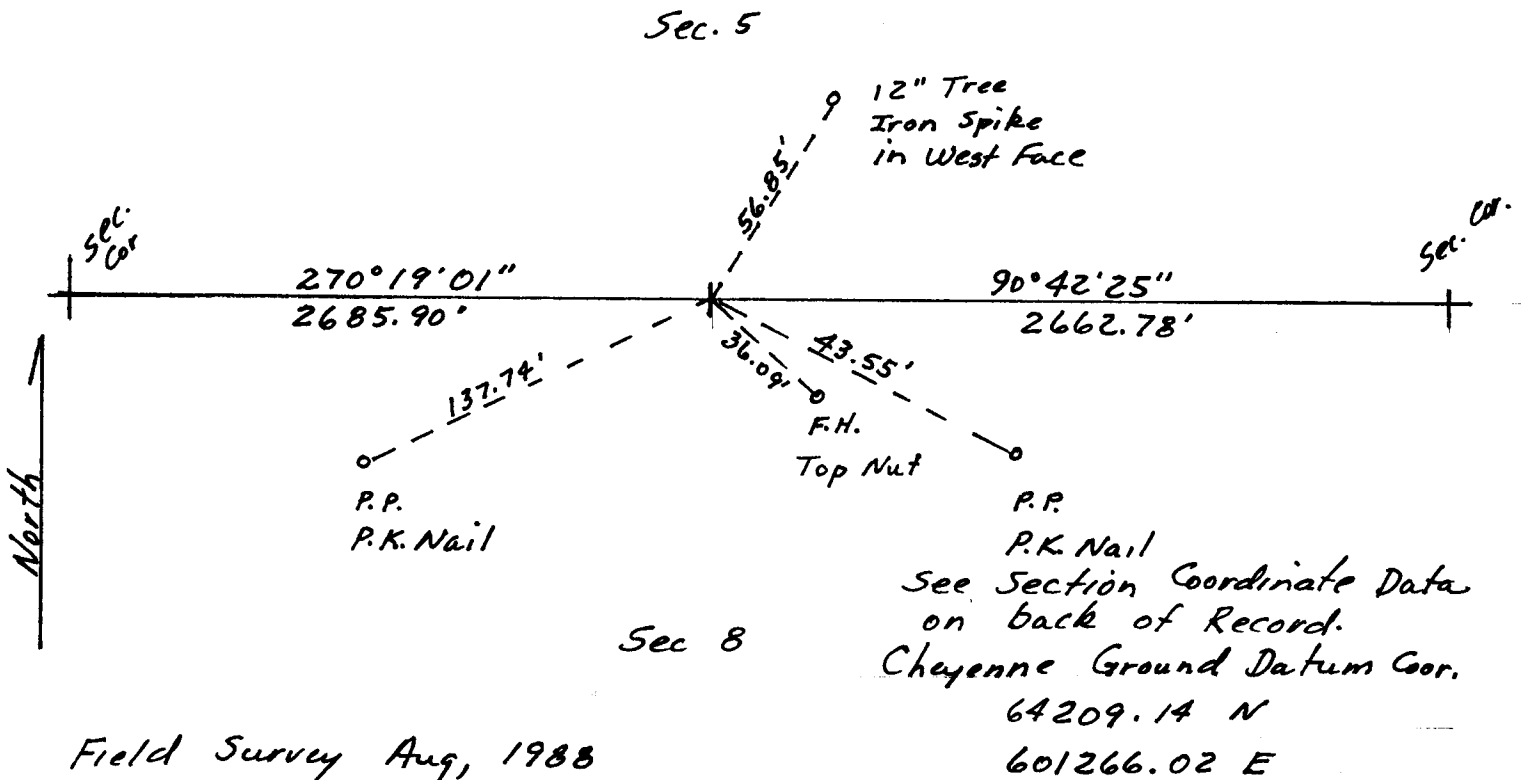


Found Hex Head Bolt at Center Line of East Fox Farm Road. Original G.L.O. description not known.

DESCRIPTION OF MONUMENT AND ACCESSORIES ESTABLISHED TO PERPETUATE THE ORIGINAL LOCATION OF THIS CORNER:

Accessories as indicated below.

SKETCH, WITH COURSE AND DISTANCE TO ADJACENT CORNER IF DETERMINED IN THIS SURVEY. (May Sketch or Paste Reproduction on Reverse Side.)



I, Edward C. Fry certify that I have carefully performed ~~or reviewed~~ the work done on the diagrammed corner as reported on this recordation form and approve the same.

Edward C. Fry PE/LS 662  
Signature of Surveyor Registration No.

STATE OF WYOMING,  
Office of Clerk and Recorder,  
County of Laramie

This "corner record" was filed for record on the 6th day of September, 19 88, was noted on the cross-index plat and is assigned page No. 1368, in book No. 1264.

Janet C. Whitehead  
County Official

|                       |          |          |            |
|-----------------------|----------|----------|------------|
| Cross Index No. _____ | T. _____ | R. _____ | Mer. _____ |
| _____                 | T. _____ | R. _____ | Mer. _____ |
| _____                 | T. _____ | R. _____ | Mer. _____ |
| _____                 | T. _____ | R. _____ | Mer. _____ |
| _____                 | T. _____ | R. _____ | Mer. _____ |
| _____                 | T. _____ | R. _____ | Mer. _____ |
| _____                 | T. _____ | R. _____ | Mer. _____ |

64223.99 N.  
598580.15 E.

64209.14 N.  
601266.02 E.

64176.29 N.  
603928.59 E.

61588.44 N.  
598568.92 E.

8

61531.38 N.  
603930.70 E.

58935.01 N.  
59856.94 E.

58923.82 N.  
601234.27 E.

58910.18 N.  
603933.97 E.

City of Cheyenne - Ground Datum Coordinates  
Section 8, T 13 N, R 66 W.